



# Edible Gardens

# Community Benefits



Support sustainability



Enhance local ecosystems



Build stronger connections within our communities



Promote food security  
( Yard  
Sharing/Community  
Gardens/ Urban  
Agriculture



Access to fruit,  
vegetables, and  
flowers

# Aesthetic Benefits

Colour

Change with the seasons

Structural

Texture

# Design Principles



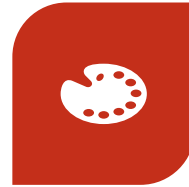
USE CONTRASTING  
FOLIAGE SIZES (SMALL  
VS LARGE SIZE  
(ZUCHINI))



STRONG LINES AND  
VERTICAL ELEMENTS  
(POLE BEANS)



STRUCTURE



OPPOSING COLOURS  
(RED AND GREEN)

# Forms

Indoor Displays

Containers

Small Yards

Large-scale annual/perennial displays

Community Gardens



# Indoor Display



# Containers



# Large-scale Annual Displays





The image is a title slide for 'Community Gardens'. It features a background photograph of a community garden with rows of plants, including large-leafed cabbages in the foreground. A person is visible in the background working in the garden. The slide is decorated with green geometric shapes on the left and right sides. The title 'Community Gardens' is centered in a large, green, sans-serif font.

# Community Gardens

# Herbs

Groundcovers or  
borders

Hardy, forgiving,  
attract  
pollinator  
interest

Add Fragrance

Basil  
Tarragon

Rosemary  
Parsley

Thyme  
Mint





# Greens

- ▶ Lettuce, Kale, Beet greens, Swiss chard, Cabbages, Sorrel
- ▶ Extend the season into cooler weather (spring and fall)



# Fruits and Vegetables

- ▶ Strawberries, Tomatoes, Artichoke, Fennel, Peppers, Eggplants, Carrots
- ▶ Fruit trees (apples, sour cherries, plums)

# Edible Flowers

- ▶ Violas and pansies
- ▶ Lavender
- ▶ Calendula
- ▶ Marigold
- ▶ Hibiscus
- ▶ Nasturtiums





Questions  
or  
Comments